

# Chapter 2

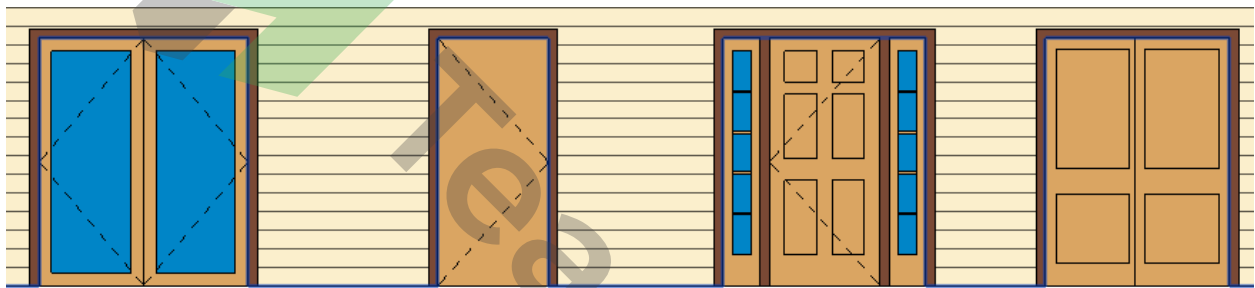
## Lesson 3: Doors and Windows

---

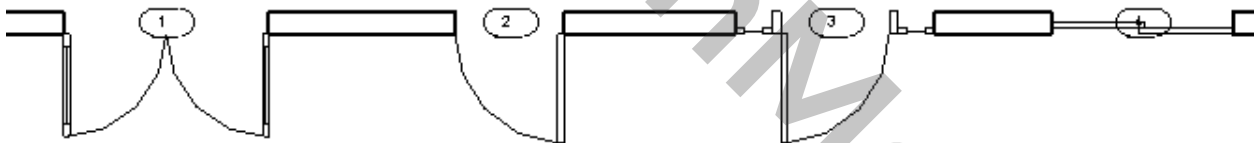
1. The door and window sizes are represented by \_\_\_\_\_ and \_\_\_\_\_.

2. A typical door height is 6'-8" or \_\_\_\_\_.

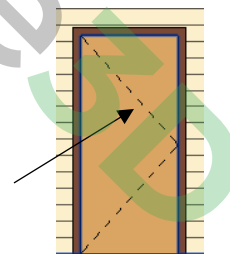
3. Label each door style below:



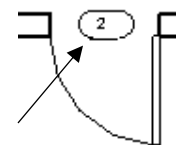
a. \_\_\_\_\_ b. \_\_\_\_\_ c. \_\_\_\_\_ d. \_\_\_\_\_



4. What does the dashed line represent on a door?



5. What does the geometric symbol next to doors and windows represent?



6. It is best practice to place doors and windows while in the \_\_\_\_\_ of your house.

7. Doors and windows are dimensioned to their \_\_\_\_\_.

8. Label each of the window styles below:

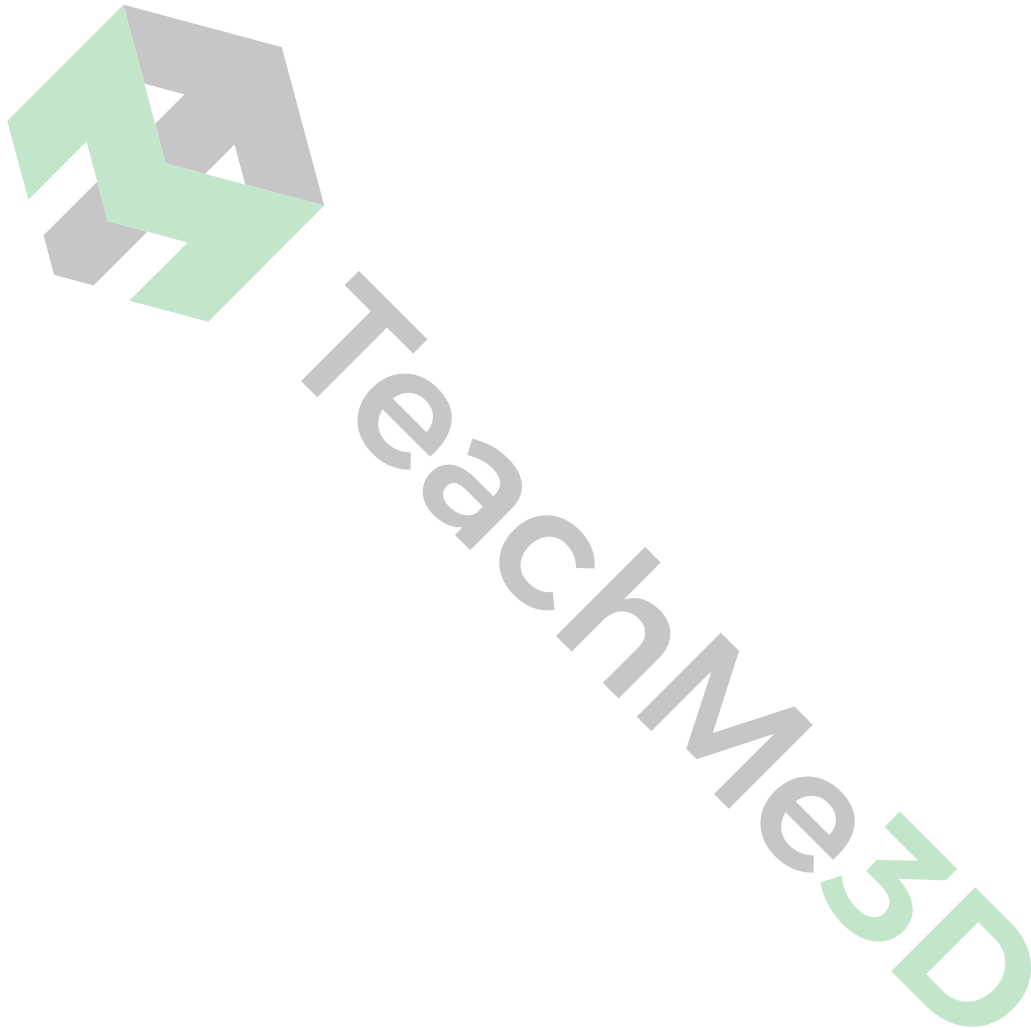


a. \_\_\_\_\_ b. \_\_\_\_\_ c. \_\_\_\_\_



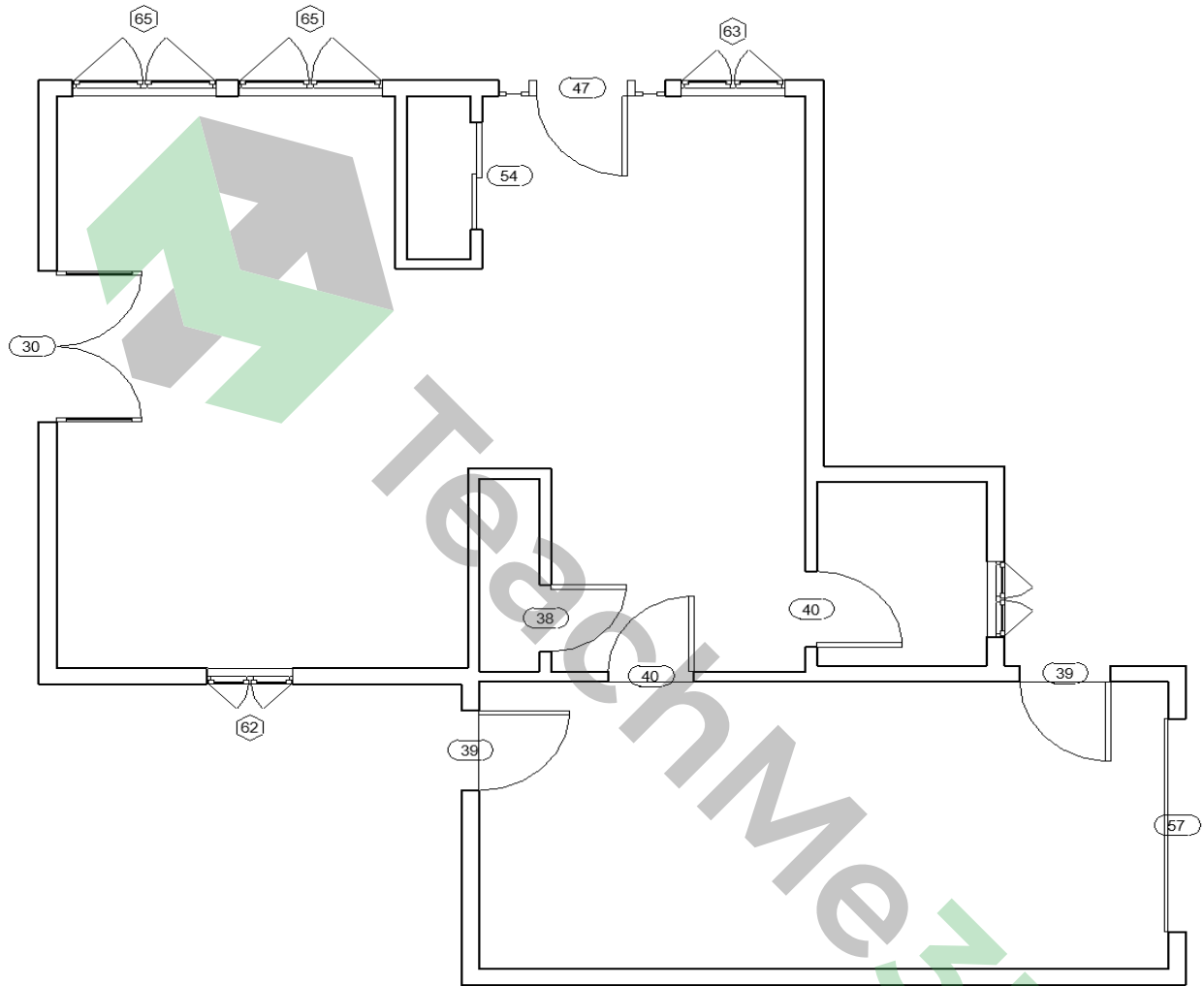
## *Demonstration*

*Follow along with the demonstration video and print out the floor plan at 50%. Tape the image in the space provided below.*



## Activity

Add the doors and windows to the Activity House. Do not worry about the exact location as they will be adjusted when the Dimension Plan is created. The door and window tags have been moved for clarity, do not reposition your tags. Also, your door tags will appear as different numbers. This was done for clarity's sake with the door and window schedules below.



Door Schedule		
Door Type	Family and Type	Count

30	Double-Glass 1: 68" x 80"	1
38	Single-Flush: 30" x 80"	1
39	Single-Flush: 36" x 80"	2
40	Single-Flush: 34" x 80"	2
47	Single-Raised Panel with Sidelights: 36" x 80"	1
54	Sliding-Closet: 48" x 80"	1
57	Door-Overhead-Sectional: 8' x 6'-6"	1

Grand total: 9

Window Schedule		
Type Mark	Family and Type	Count

62	Window-Casement-Double: 34" x 36"	2
63	Window-Casement-Double: 41" x 53"	1
65	Window-Casement-Double: 57" x 72"	2

Grand total: 5